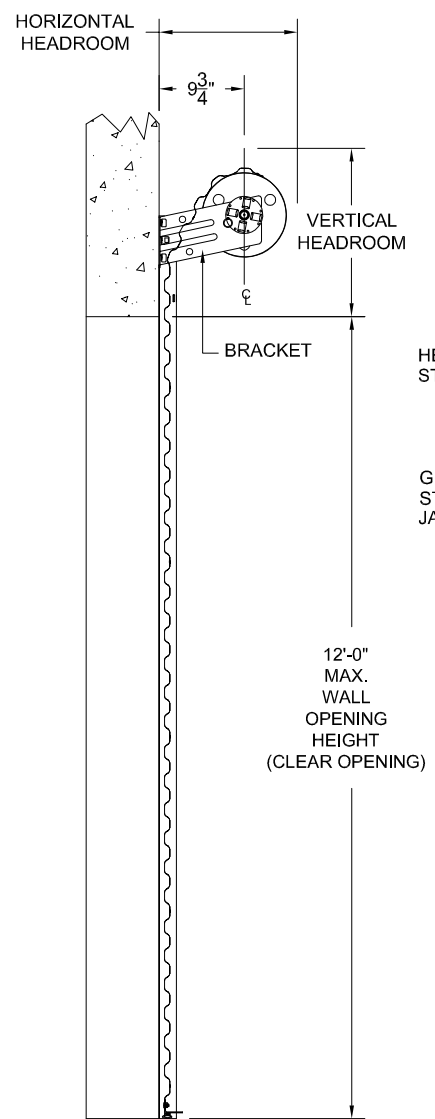
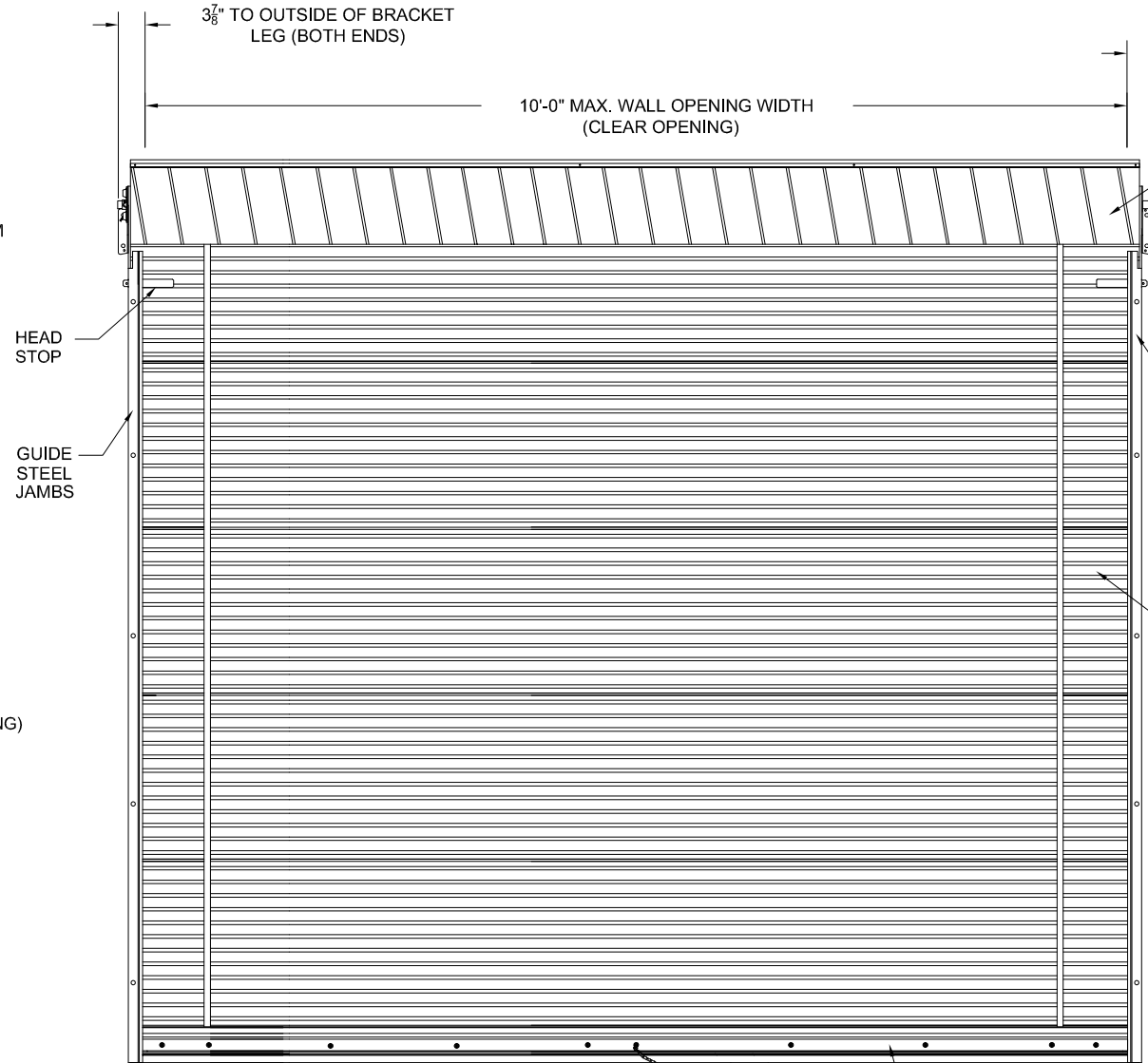


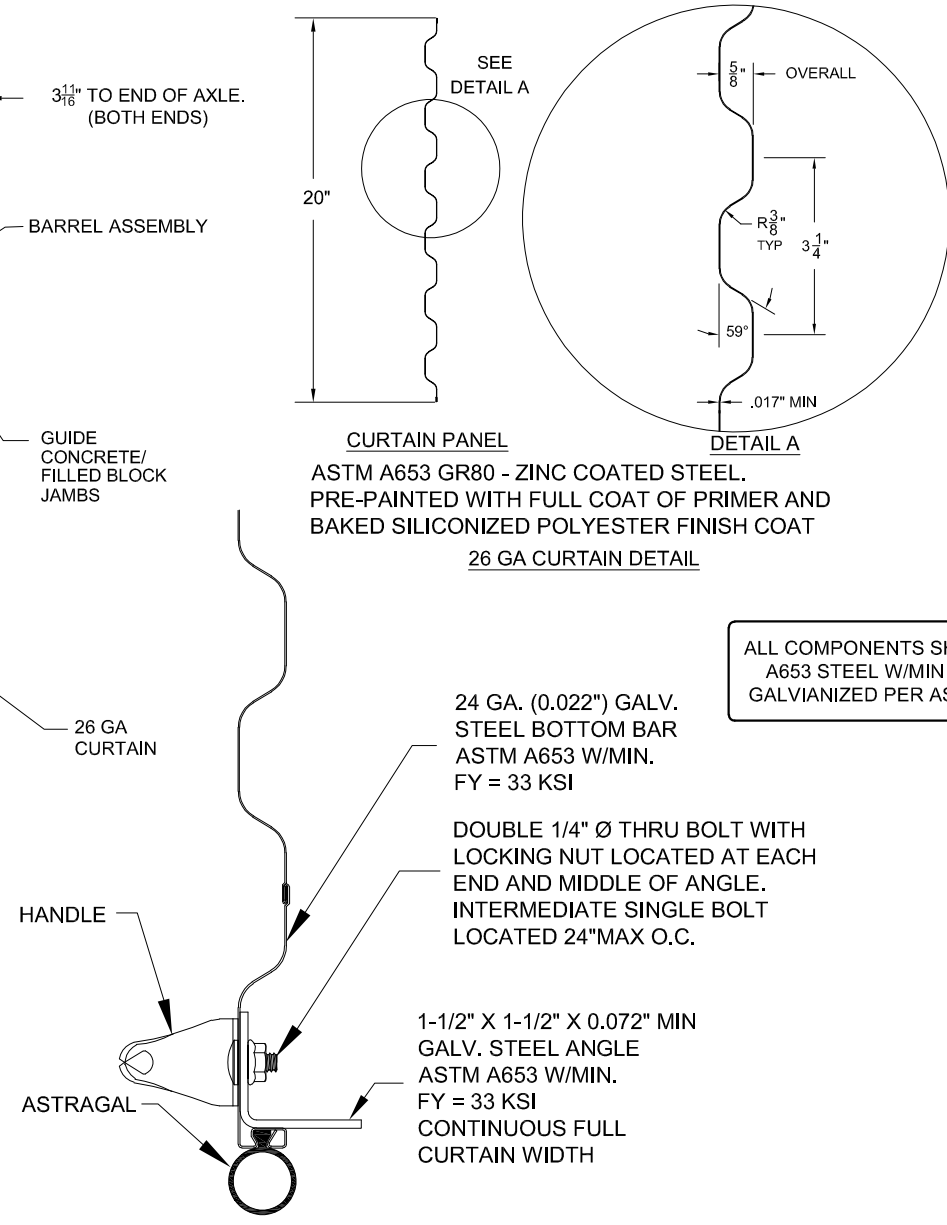
REVISIONS			
REV	DESCRIPTION	DATE	APPROVAL
—	DRAWING RELEASE	11-14-02	DM
A	NOTE REVISIONS	4-16-04	DM
B	NOTE REVISIONS	6-17-09	CS
C	RE-TEST 9-19-13	10-24-13	CS
D	16 GA. STEEL JAMB/1.5X1.5X.072MIN BB	9-19-16	CS



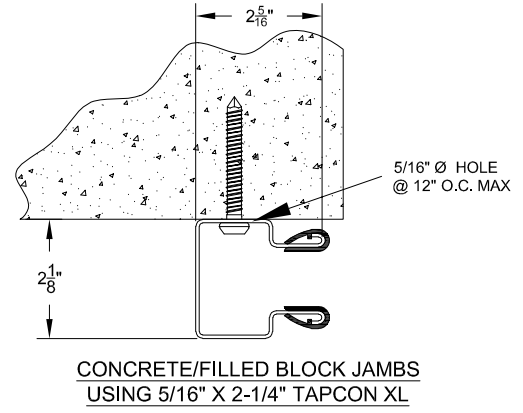
SIDE VIEW



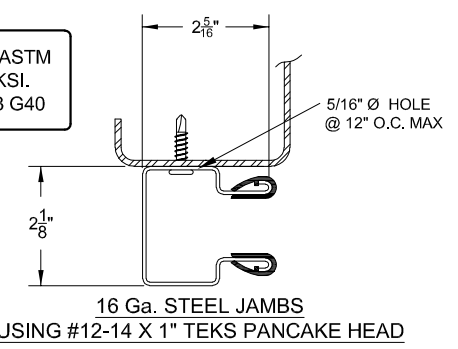
INSIDE ELEVATION



BOTTOM BAR ASSEMBLY



CONCRETE/FILLED BLOCK JAMBS USING 5/16" X 2-1/4" TAPCON XL



16 Ga. STEEL JAMBS USING #12-14 X 1" TEKS PANCAKE HEAD

ALL COMPONENTS SHALL BE ASTM A653 STEEL W/MIN FY = 33 KSI. GALVIANIZED PER ASTM A653 G40

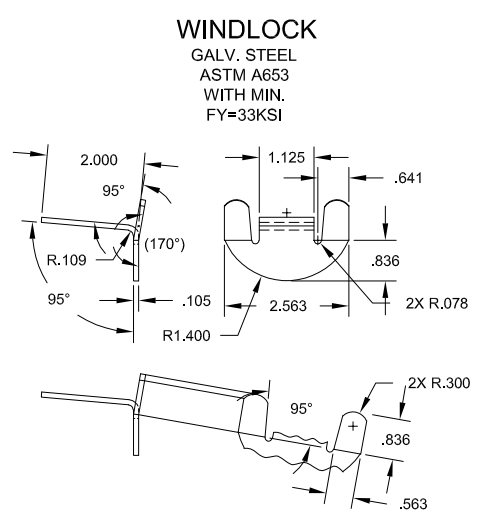
24 GA. (0.022") GALV. STEEL BOTTOM BAR ASTM A653 W/MIN. FY = 33 KSI

DOUBLE 1/4" Ø THRU BOLT WITH LOCKING NUT LOCATED AT EACH END AND MIDDLE OF ANGLE. INTERMEDIATE SINGLE BOLT LOCATED 24" MAX O.C.

1-1/2" X 1-1/2" X 0.072" MIN GALV. STEEL ANGLE ASTM A653 W/MIN. FY = 33 KSI CONTINUOUS FULL CURTAIN WIDTH

John E. Scates, P.E.  
3121 Fairgate Dr.  
Carrollton, TX 75007  
FL PE 51737

Professional Engineer's seal provided only for verification of windload construction details.



WINDLOCK GALV. STEEL ASTM A653 WITH MIN. FY=33KSI

OPENING HEIGHT	VERTICAL HEADROOM	HORIZONTAL HEADROOM
THRU 7'-4"	15-1/2"	17-1/2"
OVER 7'-4" THRU 8'-8"	16"	18"
OVER 8'-8" THRU 10'-0"	17"	18-1/4"

HEADROOM REQUIRED

THESE CONFIDENTIAL DOCUMENTS SUBMITTED BY JANUS CONTAIN INFORMATION OF A PROPRIETARY NATURE AND MAY NOT BE REPRODUCED OR USED TO MANUFACTURE ANYTHING IN PART OR IN WHOLE FOR ANY PURPOSE OTHER THAN THAT WHICH IS NECESSARY FOR PREPARATION OF BIDS OF ENGINEERING WITHOUT THE EXPRESS PERMISSION OF JANUS WHICH MAY RECALL DOCUMENTS AT ANY TIME.

UNLESS OTHERWISE SPECIFIED DIMENSIONS ARE IN INCHES AND TOLERANCES ARE:

DECIMAL	FRACTIONS	ANGLES	HOLE DIAMETERS
.XX ±.03	± 1/16	± 0° 30'	UNDER 0.251 +.004 -.003
.XXX ±.005			0.251 to 0.500 +.006 -.003
			OVER 0.500 +.008 -.003

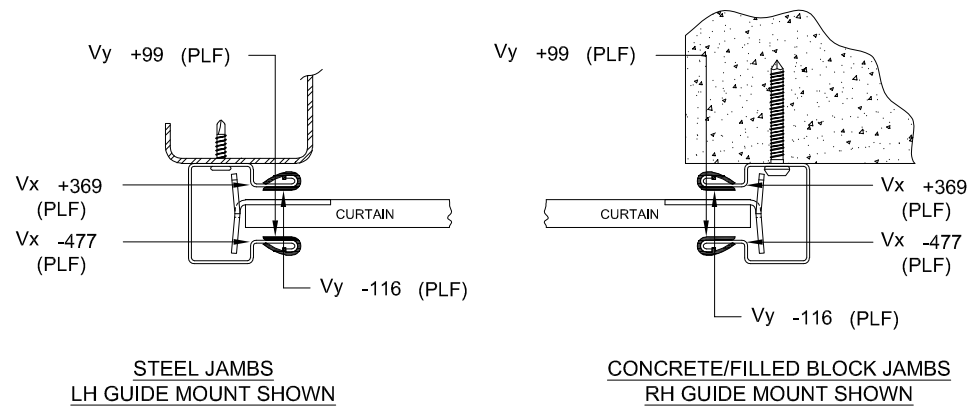
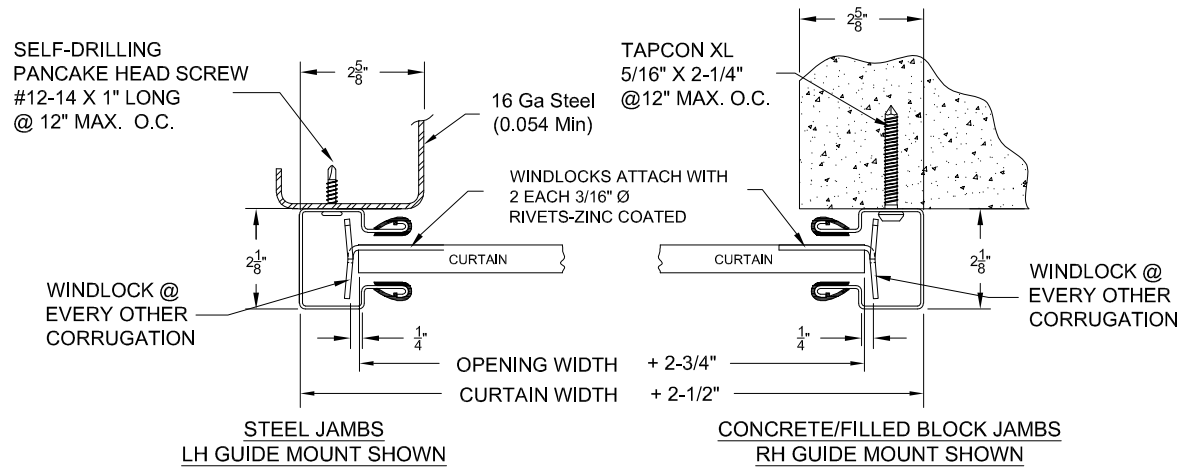
PART NUMBER:	
MATERIAL:	
APPLIED FINISH:	
UNIT OF MEASURE:	
APPROVALS	DATE
DRAWN: BECKY NELSON	11-14-02
CHECKED: DON MILLS	11-14-02
APPROVED: DON MILLS	11-14-02

**JANUS INTERNATIONAL CORPORATION**  
135 JANUS INTERNATIONAL BLVD. TEMPLE, GA 30179-4435  
770-562-2850/Fax 770-562-2264  
© 2016 Janus International Corporation All Rights Reserved

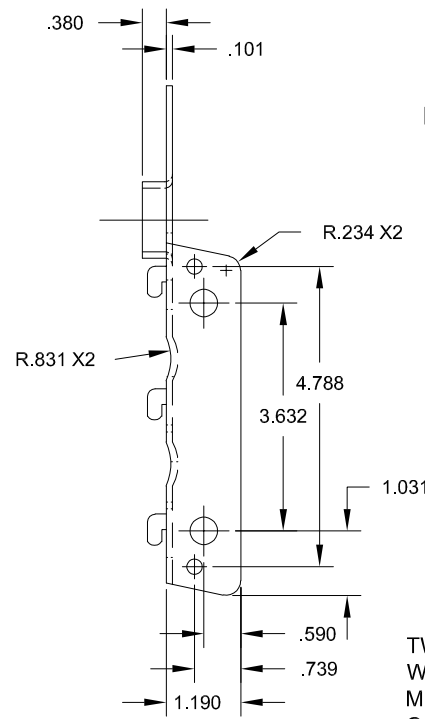
CERTIFIED WIND LOAD RATED  
26 GA SERIES 750 DOOR ASSEMBLY  
MAX. SIZE: 10'-0" X 12'-0"

SIZE <b>B</b>	DRAWING NUMBER: <b>T1003</b>	REV: <b>D</b>
SCALE: NONE	SHEET: 1	OF: 2

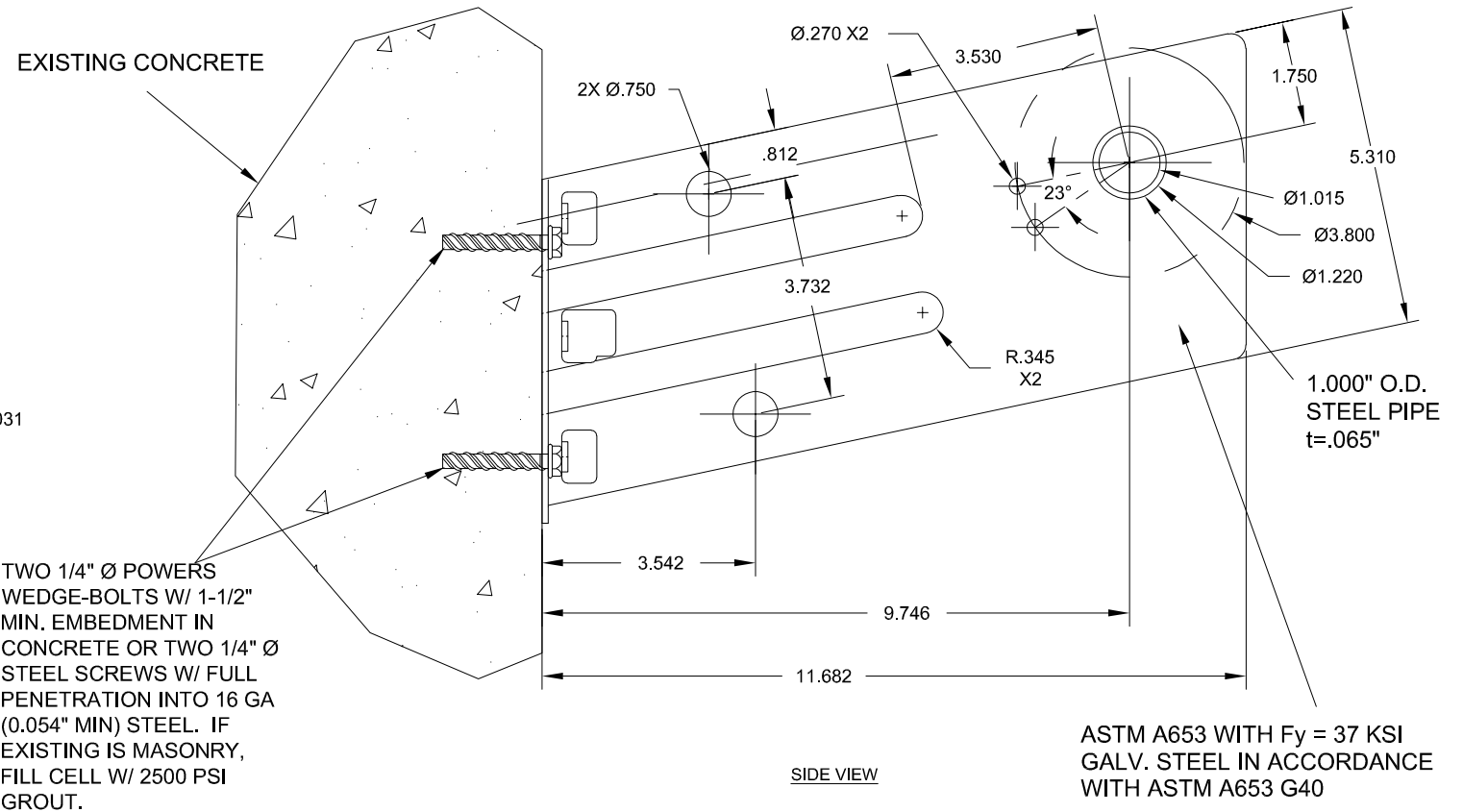
REVISIONS			
REV	DESCRIPTION	DATE	APPROVAL
—	DRAWING RELEASE	11-14-02	DM
A	NOTE REVISIONS	4-16-04	DM
B	NOTE REVISIONS	6-17-09	CS
C	RE-TEST 9-19-13	10-24-13	CS
D	16 GA. STEEL JAMB/1.5X1.5X.072MIN BB	9-19-16	CS



**SUPERIMPOSED LOAD DIAGRAM**



**REAR VIEW**



**DOOR MOUNTING BRACKET DETAIL**

ASTM A653 WITH Fy = 37 KSI GALV. STEEL IN ACCORDANCE WITH ASTM A653 G40

**GENERAL NOTES**

- THIS ROLL-UP DOOR SYSTEM IS DESIGNED IN ACCORDANCE WITH THE FLORIDA BUILDING CODE.
- THIS ROLL-UP DOOR HAS BEEN TESTED IN ACCORDANCE WITH ASTM E-330 AND COMPLIES WITH ANSI/DASMA 108.  
DESIGN LOAD = +19.4 PSF  
-22.7
- WIND LOADS FOR BUILDING OPENINGS SHALL BE DETERMINED BY A PROFESSIONAL ENGINEER USING APPROPRIATE WIND SPEED AND DESIGN CRITERIA. THIS DOOR MAY BE USED WHERE THE DESIGN LOAD MEETS OR EXCEEDS THE DESIGN LOAD FOR THE BUILDING OPENING.
- SUPERIMPOSED LOADS ON THE JAMBS FROM THIS DOOR ARE DESIGNED AS Vx AND Vy HEREIN. CONTRACTORS SHALL HAVE BUILDING ENGINEER VERIFY ADEQUACY OF BUILDING STRUCTURE TO RESIST SUPERIMPOSED LOADS Vx, Vy, AND BRACKET LOADS SHOWN.
- ALL WELDING SHALL BE PERFORMED BY QUALIFIED WELDERS IN ACCORDANCE WITH A.W.S. SPECIFICATIONS, LATEST EDITION. ALL WELDING ELECTRODES SHALL CONFORM TO A.W.S. A5.1 GRADE E-70.
- DOORS SHALL BE PROVIDED WITH LOCK MECHANISMS AT THE OPTION OF THE OWNER.
- ALL BOLTS AND WASHERS SHALL BE GALVANIZED OR STAINLESS STEEL WITH A MINIMUM TENSILE STRENGTH OF 60 KSI.
- DESIGN BASED ON UNDERWRITERS LABORATORIES TEST REPORT NO. SV30743-20161010-REPORT4

- ANCHOR NOTES:  
A. EMBEDMENT LENGTH DOES NOT INCLUDE STUCCO FINISH.  
B. FOR HOLLOW MASONRY, FILL ALL CELLS @ ANCHOR WITH 2500 PSI GROUT.  
C. ANCHORS SHALL BE INSTALLED IN ACCORDANCE WITH MANUFACTURER'S SPECIFICATIONS.
- DOOR OPERATION TYPED TO BE PUSH-UP.
- GUIDE TO JAMB ATTACHMENT FASTENERS BEGIN 4" FROM FLOOR AND END 3-1/2" BELOW TOP OF WALL OPENING.
- TEST DOOR WALL OPENING SIZE: 10'-0" X 8'-0"

John E. Scates, P.E.  
3121 Fairgate Dr.  
Carrollton, TX 75007  
FL PE 51737

Professional Engineer's seal provided only for verification of windload construction details.

<p>THESE CONFIDENTIAL DOCUMENTS SUBMITTED BY JANUS CONTAIN INFORMATION OF A PROPRIETARY NATURE AND MAY NOT BE REPRODUCED OR USED TO MANUFACTURE ANYTHING IN PART OR IN WHOLE FOR ANY PURPOSE OTHER THAN THAT WHICH IS NECESSARY FOR PREPARATION OF BIDS OF ENGINEERING WITHOUT THE EXPRESS PERMISSION OF JANUS WHICH MAY RECALL DOCUMENTS AT ANY TIME.</p> <p>UNLESS OTHERWISE SPECIFIED DIMENSIONS ARE IN INCHES AND TOLERANCES ARE:</p> <table border="1"> <thead> <tr> <th>DECIMAL</th> <th>FRACTIONS</th> <th>ANGLES</th> <th>HOLE DIAMETERS</th> </tr> </thead> <tbody> <tr> <td>.XX ±.03</td> <td>± 1/16</td> <td>± 0° 30'</td> <td>UNDER 0.251 +.004 -.003</td> </tr> <tr> <td>.XXX ±.005</td> <td></td> <td></td> <td>0.251 to 0.500 +.006 -.003</td> </tr> <tr> <td></td> <td></td> <td></td> <td>OVER 0.500 +.008 -.003</td> </tr> </tbody> </table>	DECIMAL	FRACTIONS	ANGLES	HOLE DIAMETERS	.XX ±.03	± 1/16	± 0° 30'	UNDER 0.251 +.004 -.003	.XXX ±.005			0.251 to 0.500 +.006 -.003				OVER 0.500 +.008 -.003	<p>PART NUMBER:</p> <p>MATERIAL:</p> <p>APPLIED FINISH:</p> <p>UNIT OF MEASURE:</p>	<p><b>JANUS INTERNATIONAL CORPORATION</b> 135 JANUS INTERNATIONAL BLVD. TEMPLE, GA 30179-4435 770-562-2850/Fax 770-562-2264 © 2016 Janus International Corporation All Rights Reserved</p> <p>CERTIFIED WIND LOAD RATED 26 GA SERIES 750 DOOR ASSEMBLY MAX. SIZE: 10'-0" X 12'-0"</p>
	DECIMAL	FRACTIONS	ANGLES	HOLE DIAMETERS														
	.XX ±.03	± 1/16	± 0° 30'	UNDER 0.251 +.004 -.003														
	.XXX ±.005			0.251 to 0.500 +.006 -.003														
			OVER 0.500 +.008 -.003															
<p>APPROVALS</p> <p>DATE</p>	<p>APPROVALS</p> <p>DATE</p>																	
<p>DRAWN: BECKY NELSON</p> <p>CHECKED: DON MILLS</p> <p>APPROVED: DON MILLS</p>	<p>11-14-02</p> <p>11-14-02</p> <p>11-14-02</p>																	
<p>SIZE: <b>B</b></p> <p>SCALE: NONE</p>	<p>DRAWING NUMBER: <b>T1003</b></p> <p>SHEET: 2 OF: 2</p>	<p>REV: <b>D</b></p>																